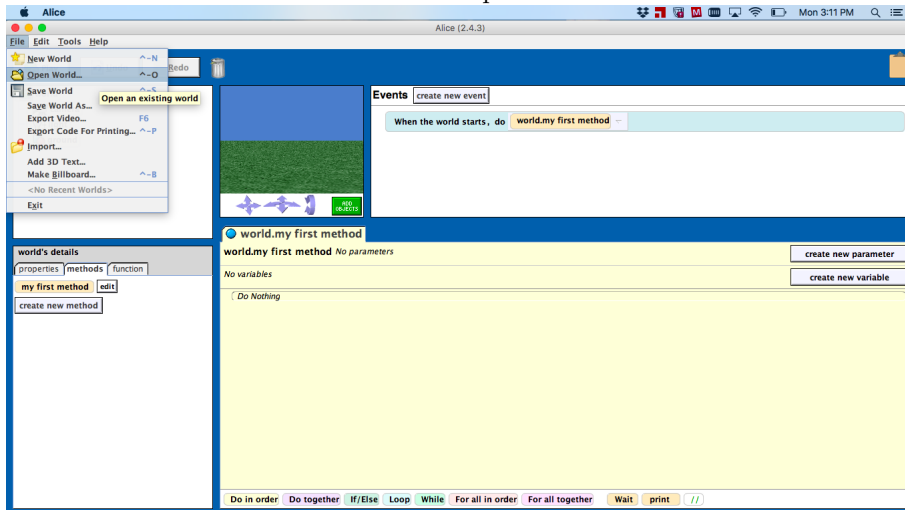


Opening a Saved World in Alice 2

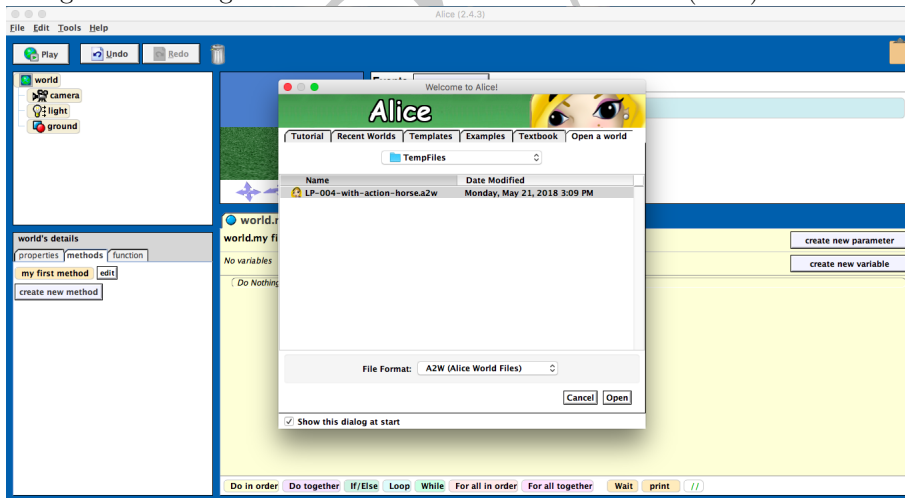
1. Save an Alice file (.a2w) on the computer.



2. Start Alice 2.
3. Under the “File” menu select the tab ”Open a World”.



4. Navigate the dialog box to the location of the saved Alice (.a2w) file. Once located click “Open”.



If you have feedback/questions, please contact storytelling@montana.edu. This material is based upon work supported by the National Science Foundation under Grant No. DRL 1657553. **Disclaimer:** Any opinions, findings, and conclusions or recommendations expressed in this material are those of the author(s) and do not necessarily reflect the views of the National Science Foundation.